

CONTROLLER

Minicam Hathorn H12+

The Minicam Hathorn H12+ is in a class of its own with the brightest daylight-readable 12" LCD screen in the industry. It has almost three times the brightness of the leading brand providing stunning picture quality, high contrast and 8X digital "pan & zoom" technology revealing details missed by other pipe inspection cameras.

Available with Wi-Fi as an option, the H12+ has menus in three languages (English, French and Spanish), compatibility with all Hathorn reels past, present and future from 100- 600ft., unique on-screen job information bar and text overlay features, two sonde frequencies (512Hz & 640Hz) and industry-leading on-board file storage.

The H12+ comes standard with a 128Gb hard drive which is upgradeable to 512Gb allowing the user to save MPEG videos and JPEG screen shots to either the HDD or to a USB stick. Powered by 18V Milwaukee® (or equivalent) batteries, the H12+ will run for over 4 hours on a single charge. Batteries sold separately.



Light Weight
4.5 kg / 9.5 lbs



Screen Shot
Function



Internal
Hard Drive
128GB or 512GB



Works with 18V
Milwaukee® or
Equivalent Batteries*



Full Size
Keyboard



Daylight
Readable
Display



Record to
USB & HDD



Hathorn
Info Bar



Camera LED
Light Control



Industry-
Leading
Warranty

* Battery: Milwaukee 18V is default, other brand 18V batteries can be used with adaptors.



MINICAM HATHORN | H12+

CONTROLLER

SPECIFICATIONS

Display

Size & Display	30.7 cm (12") impact-resistant LCD
Resolution & Brightnes	XGA 1024 × 768 pixels with 1,300 cd/m ²
Zoom	1X, 2X, 4X, 8X with digital zoom feature

Recording, Storage & Features

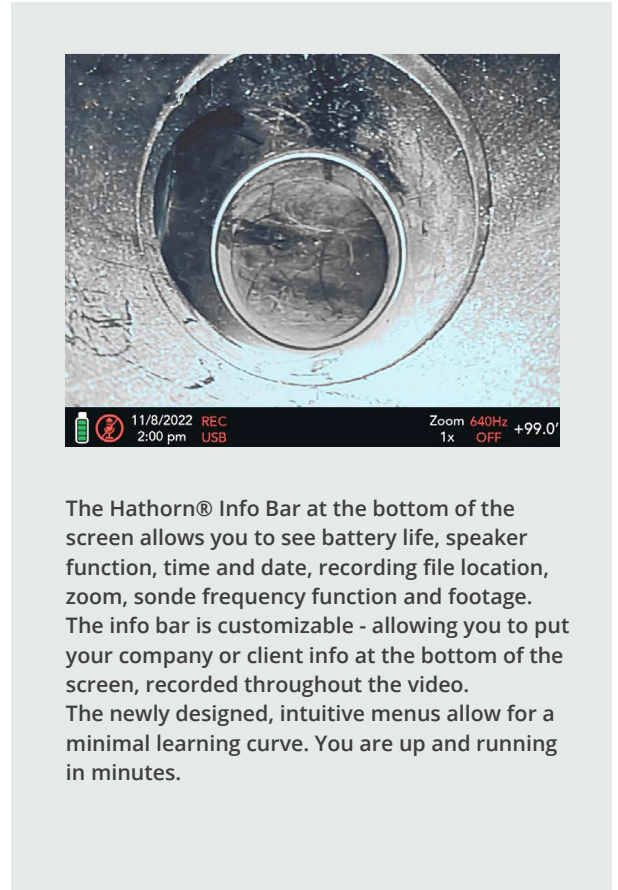
Recording Options	MPEG4 video (H.264 at 30 fps) & JPEG screenshot
Storage Options	USB, HDD or USB & HDD
USB Capacity	USB 2.0 up to 32Gb
Hard Drive Capacity	128Gb (standard) or 512Gb (upgrade)
Keyboard	Full-sized QWERTY with silicone cover
Camera Head LED	Dimming control 5% increments
Hathorn Info Bar	74 characters over 2 lines with time/date
Text Overlay	English, Spanish, French
Menu Languages	Integrated microphone and speaker
Footage Counter	Meters or feet with reset function
Sonde Frequencies	High power 512Hz or 640Hz
Reel Compatibility	All Hathorn reels (except Wi-Fi)

Power

Battery (not incl.)	Only Milwaukee® M18 18V or equivalent*
Battery Life	-4Hrs. using 3.0Ah
Battery Extender	Auto dimming & auto saving
AC/DC Adapter	12V - 4.1A (included)

Weight & Dimensions

Weight without Battery	4.3 Kg (9.5 lb)
Dimensions (L x W x H)	38 cm × 30 cm × 14 cm (15" × 12" × 5.5")



The Hathorn® Info Bar at the bottom of the screen allows you to see battery life, speaker function, time and date, recording file location, zoom, sonde frequency function and footage. The info bar is customizable - allowing you to put your company or client info at the bottom of the screen, recorded throughout the video. The newly designed, intuitive menus allow for a minimal learning curve. You are up and running in minutes.

Environmental

Operating Temperature	-10°C to 50°C (14°F to 122°F)
Storage Temperature	-20°C to 60°C (-4°F to 140°F)