

4 Button Remote Control RCP4

For Proteus Motorised Cable Reel



Original Instruction Manual

Version D

PROTEUS

Please Note:

For the purpose of this Instruction Manual

Motorised Cable Reel is abbreviated to **MCR**

Contents

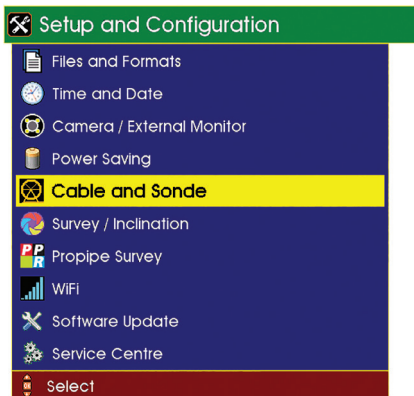
Pairing RCP4 with MCR	5
RCP4 Buttons and icons	6
RCP4 Buttons and icons	8
Connecting the RCP4	9
RCP4 Operational range and disconnection	9
RCP4 Buttons and icons	10
Buttons	11
MCR blocked and Emergency Stop button pressed	11
RCP4 Buttons and icons	12
CCU and RCP4 interactions	13
All Stop pressed	13
No CCU present	13
Charging the Battery	14
Accessories	15

The four button Remote Control (RCP4) is used to control a Crawler and Motorised Cable Reel (MCR) remotely using Bluetooth® technology. The MCR can be controlled directly without the presence of the Control Unit (CCU) after the “pairing” process has been completed.

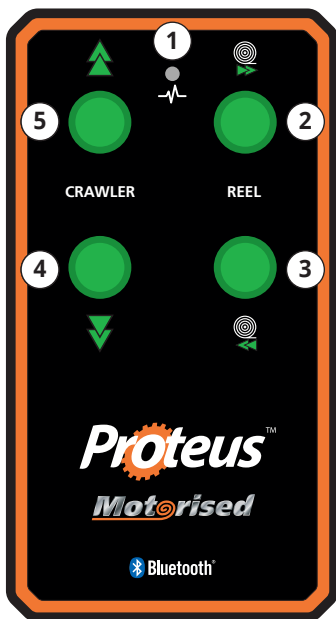
Pairing RCP4 with MCR

In order to pair the RCP4 with the Bluetooth® capable MCR, a CCU with software no older than revision 5.3.7 (date 06/09/2017) is needed.

- 1 Select **Cable and Sonde** from the **Setup and Configuration**. drop-down menu. If the menu is not visible then the CCU requires a software update.

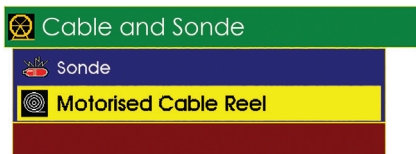


RCP4 Buttons and icons

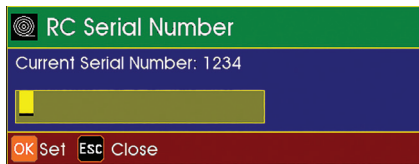


- 1 Status LED
- 2 Reel Paying Out Button
- 3 Reel Rewind Button
- 4 Crawler Reverse Button
- 5 Crawler Forward Button

- 2 Select **Motorised Cable Reel** from the list.



- 3 The RCP4 Control **Serial Number** has to be entered in the input box presented to the user.



The **Serial Number** can be found on the label attached to the back of the RCP4.



- 4 Press the **OK** button on CCU's keyboard.

RCP4 Buttons and icons



- 1 Status LED
- 2 Reel Paying Out Button
- 3 Reel Rewind Button
- 4 Crawler Reverse Button
- 5 Crawler Forward Button

- 5 After 2 seconds the **Current Serial Number** should indicate the recently entered serial number.

After completing these steps, the MCR is ready to operate with the RCP4. The process needs to be repeated only if a new RCP4 with a different serial number has to be used. Only one RCP4 can be paired with a specific MCR at one time.

Connecting the RCP4

- 1 Switch the RCP4 **ON** by pressing any button. The RCP4 will make a beep sound and start flashing the green LED rapidly until it connects to the MCR. Once the connection is successful the LED will go solid for a second and then switch off.
- 2 If the green LED keeps flashing it indicates that the RCP4 is not able to connect to the MCR. Please make sure the pairing with the RCP4 (page 5) has been completed and the correct serial number has been entered.

RCP4 Operational range and disconnection

The RCP4 will operate up to 5 metres from the MCR. If the path between the RCP4 and the MCR is obstructed, or it is further than 5 metres, the RCP4 will disconnect.

Disconnection is indicated by a short bleep and flashing green LED. The RCP4 will immediately try to reconnect to the MCR, and if it succeeds the green LED will go solid for a second and then switch off.

RCP4 Buttons and icons



- 1 Status LED
- 2 Reel Paying Out Button
- 3 Reel Rewind Button
- 4 Crawler Reverse Button
- 5 Crawler Forward Button

Buttons

1 Crawler Buttons

- a Press and hold the **Crawler Forward** button (5) to command the crawler to move forwards at a fixed speed.
The MCR will pay-out the cable at the same time.

- b Press and hold the **Crawler Backward** button (4) to command the crawler to move backwards at a fixed speed. The MCR will pay-out the cable. The MCR won't rewind the cable, to make it easier to position the crawler using the RCP4.

2 MCR Buttons

- a Press and hold the **Reel Pay-Out** button (2) to command the motorised cable reel to pay-out the cable.
- b Press and hold the **Reel Rewind** button (3) to command the MCR to rewind the cable.

MCR blocked and Emergency Stop button pressed

- a The RCP4 will alert a user of the cable being blocked or the MCR **Emergency Stop** button being pressed, by flashing the red LED and beeping twice per second.
- b The user can press and hold both cable reel buttons (2) and (3) for 5 seconds to clear the alert. The Emergency Stop button has to be released first.

RCP4 Buttons and icons



- 1 Status LED
- 2 Reel Paying Out Button
- 3 Reel Rewind Button
- 4 Crawler Reverse Button
- 5 Crawler Forward Button

CCU and RCP4 interactions

The RCP4 and CCU cannot both operate the crawler or the MCR at the same time. If this happens a warning will be sounded on the RCP4 and the CCU, and they will both stop operating the MCR. The RCP4's red LED will also flash rapidly. The keys on both devices need to be released for at least 2 seconds before normal operation can continue.

All Stop pressed

The crawler buttons (4) and (5) will stop operating the crawler, but the Reel buttons will still operate.



No CCU present

The crawler buttons (4) and (5) will stop operating the crawler, but the Reel buttons will still operate

Charging the Battery

When RCP4 is being charged, for safety reasons it stops operating the crawler or MCR. When the LED flashes red, this indicates **Low Battery**. To charge RCP4, connect it to the charger using a USB cable, the LED will light orange. When fully charged the LED flashes green and bleeps.



PLEASE NOTE the battery cannot be charged in temperatures below freezing. The 4 Button remote will operate as normal if connected to charger, in conditions below freezing.

Accessories

The following accessories can be purchased separately from Minicam or your Local Minicam Dealer.

Multi Region USB Mains Power Plug

Minicam Part Number: PSU-005-171

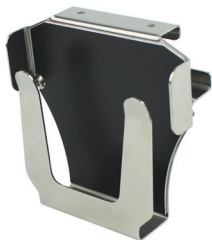
USB Cable

Minicam Part Number: CAB-005-172



Proteus MCR Remote Control Holder

Minicam Part Number: ASS-004-440





Minicam Ltd
Unit 4, Yew Tree Way,
Stonecross Park,
Golborne,
Warrington,
WA3 3JD
United Kingdom

Tel: +44 (0)1942 270524
Email: info@minicam.co.uk
www.minicamgroup.com



A **Halma** company