

## ProLaser

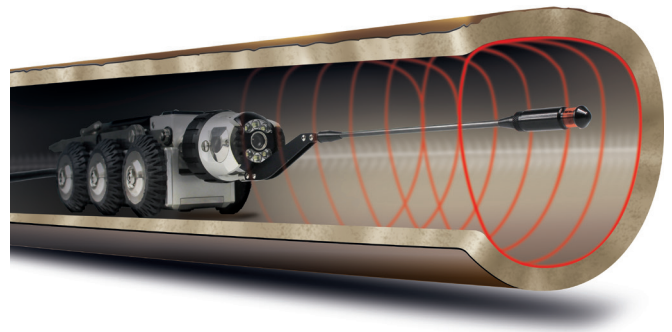
Pinpoint accurate laser profiling of pipes and sewers. ProLaser is the perfect partner for any CCTV inspection system and provides accurate analysis of the true pipe condition prior to and after rehabilitation.

### Data Analysis and Delivery

The Minicam Laser profiler has been designed to provide accurate and repeatable pipe geometry for many pipeline conditions. Simply attach the device to your CAM026 and WinCan will do the rest! All results are automatically calculated and can be delivered via WinCan. The WinCan software generates the report automatically, including diameter, ovality, capacity and also provides 3-dimensional XYZ-data.

### Why do you need a pipe profiler?

If you are a municipality, consulting engineer or contractor, the Profiler is a necessary tool for the analysis of the true pipe condition prior to and after rehabilitation. When used as a video survey tool it can provide accuracy up to 1mm when measuring pipe size, deformation, erosion encrustation, debris, grease, flows, lateral protrusion, surface damage and holes.



## Compatibility

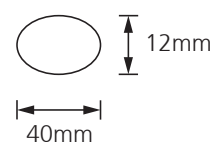
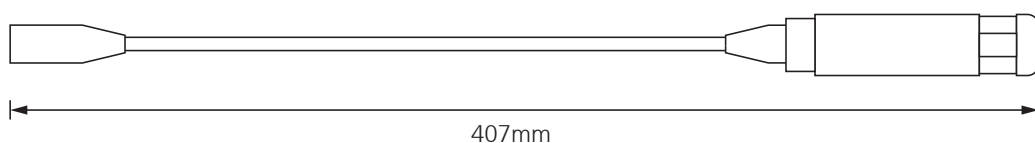
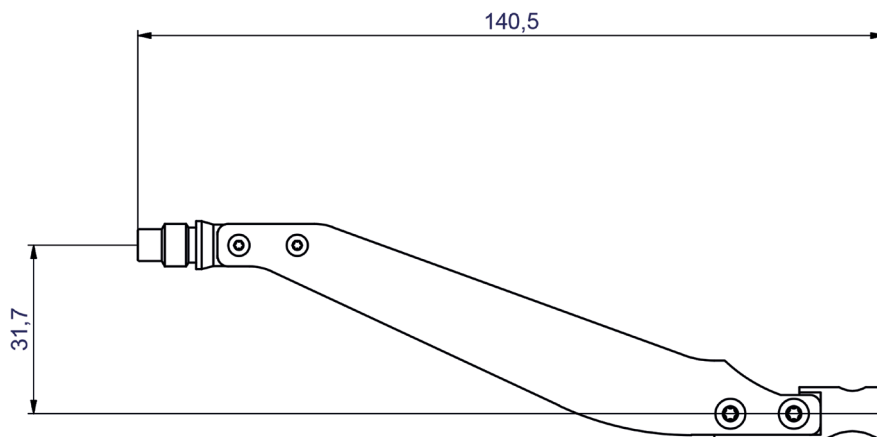
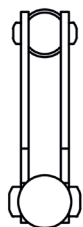


## Technical Data

Dimensions (L x W x H)	407 x 40 x 12mm
Weight	0.16kg (0.63lb)

# ProLaser

Laser Bracket



Laser



Storage Case



ProLaser fitted to crawler

