

Floatation Raft

Designed for today's stringent health and safety policies. Small enough to be lowered down most common sizes of manhole cover, eliminating the need for man-entry.

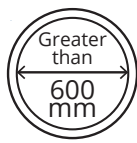
Three extremely powerful angled auxiliary LED light modules provide enough light to illuminate pipes in excess of 1000mm, while the compact design allows inspection capability in pipes from 600mm.

Designed and manufactured in-house to exacting standards, the tough polyethylene construction of the raft body is impact resistant and designed to withstand challenging inspections. An in-built lowering loop makes for quick and easy deployment and retrieval, and the factory tested floatation plate ensures the device is perfectly balanced to eliminate rolling.

Simply plug and play* with an existing Proteus System



Compatibility

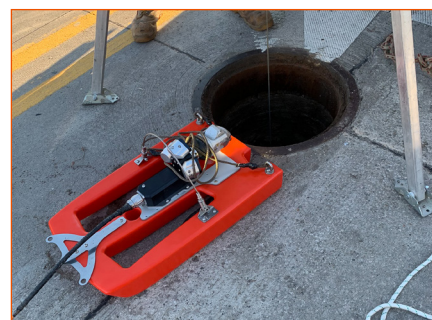
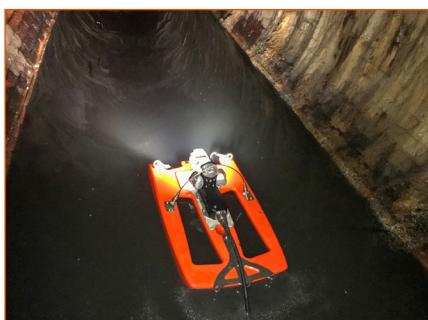
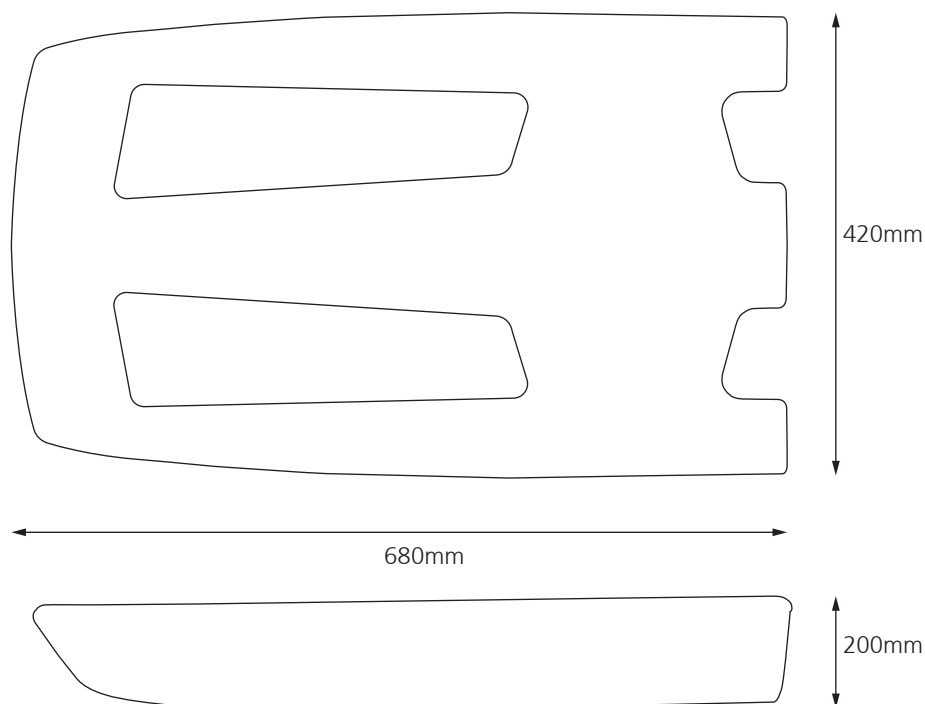


Technical Data

Dimensions	680 x 420 x 200mm
Weight	5.8kg 12.7LB

*Additional software may be required

Floatation Raft



Auxiliary Lights

Powerful LED auxiliary lights provide visibility during inspection.

112021 © 2022 Minicam



 A Halma company

Minicam, Unit 4, Yew Tree Way, Stonecross Park, Golborne, Warrington, WA3 3JD
Tel: + 44 (0) 1942 270524 • Email: info@minicam.co.uk
www.minicamgroup.com