

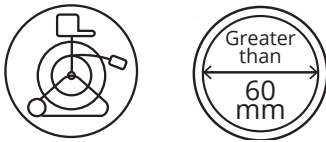
Pan, Rotate and Laser Camera

With a diameter of 49mm and continuous 360° rotation and +/- 135° pan the CAM050 offers robust versatility, perfect for small diameter pipe applications.

Integral distance sensor and twin lasers enable accurate pipe diameter, defect, and object measurements to ensure no survey is too big for this small camera.



Compatibility

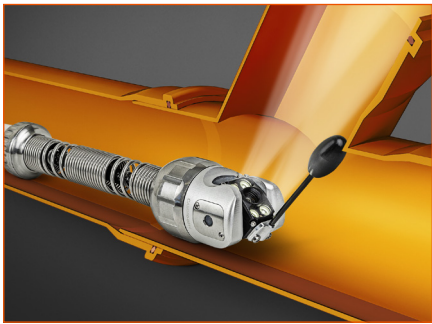
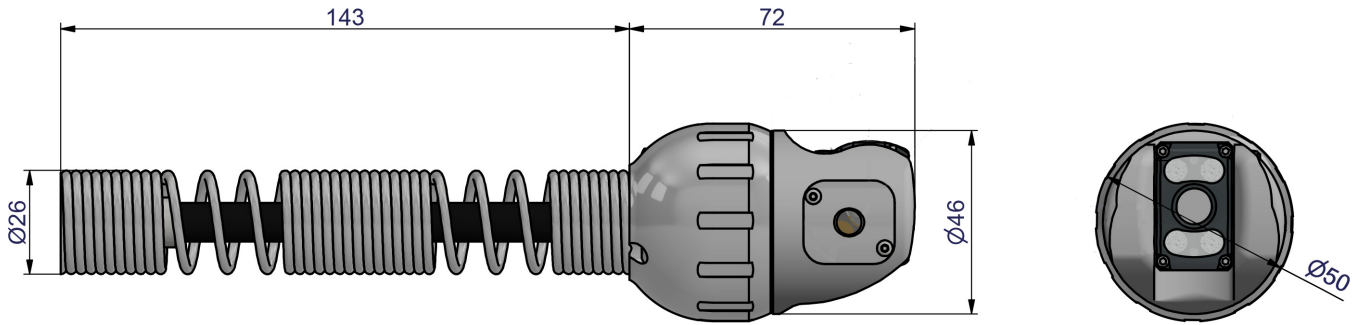


CAM050 is shipped with Minicam's SOLOPro+50 pipeline video inspection system or optionally with our standard SOLOPro+ configuration, available in multiple rod lengths and with a range of options. The CAM050 is also compatible with our LAT150, mainline to lateral inspection system.

Technical Data

Construction	Stainless Steel / Aluminium
Pipe Compatibility	Skids to suit 100mm (4i) and 150mm (6i) Pipes
Pipe Sizing	Greater than 60mm (2.36i)
Aperture / Field of view	F2.5 / 75°
Laser Spacing	Dual aligned front facing / single side
Imager	CMOS Colour Camera
Effective pixels	976 x 496
Camera Sensor	740 TVL
Zoom	N-A
Focus	Manual variable
Image orientation	Auto-levelling
Illumination system	4 LEDs
Luminous Intensity	Adjustable (to 12.5k Lux at 150mm)
Sensitivity	< 1.0 Lux
Luminous Intensity	480 lm/s
Weight	570g
Size	50mm diameter

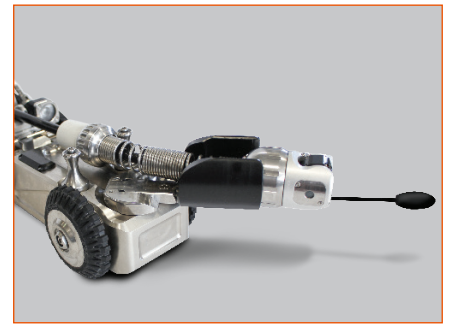
Pan, Rotate and Laser Camera



In Use



Coiler



Crawler

