

Brick Egg Stabiliser

BEP300 & BEP150/140

Original Instruction Manual

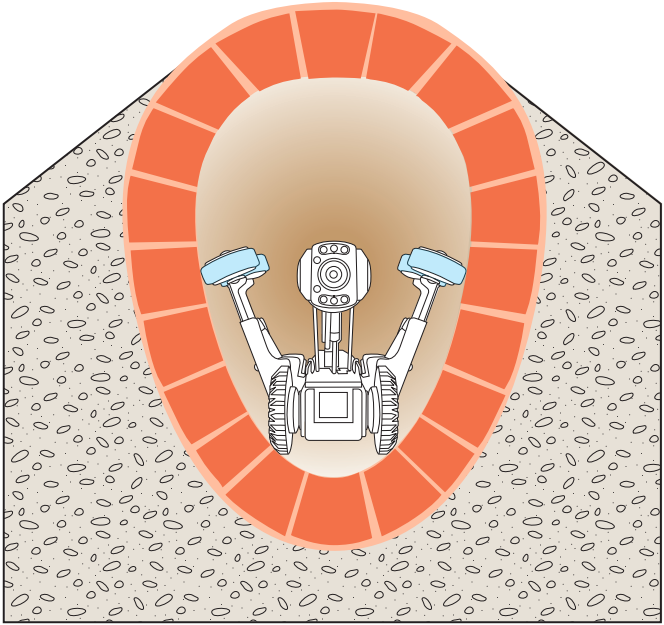
Version B

PLEASE NOTE

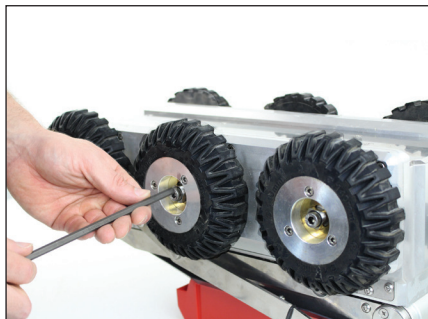
BEP300 can only be used with 140mm size wheels
BEP150/140 can only be used with 115mm and 140XL size wheels

BRICK EGG STABILISER

A simple quick fit to our Proteus Crawler, the Brick Egg Stabiliser stops the crawler from rolling over during inspections in pipes with an egg-shaped profile. Exclusively compatible with Minicam's Proteus CRP300, CPL150, CRP150 and CRP140 crawlers



| Specifications | BEP300 | BEP150/140 |
|---------------------|---------------|-------------------|
| Product Code | BEP300 | BEP150/140 |
| Compatible with | CRP300 | CRP150/140 |
| Length | 450mm | 375mm |
| Width | 190mm | 180mm |
| Height | 220mm | 210mm |
| Weight | 2.95kg | 2.05kg |

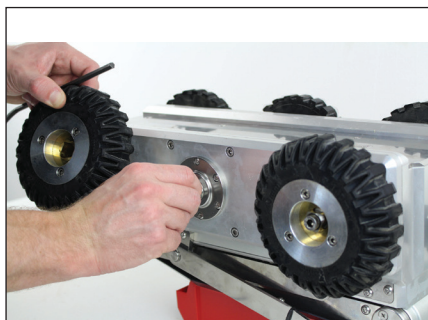


01

Turn the crawler upside-down and place on a sturdy raised object while you carry out the installation of the Stabiliser. Using T-Bar/Allen key* loosen the axle bolts of the centre wheel on each side of the crawler.

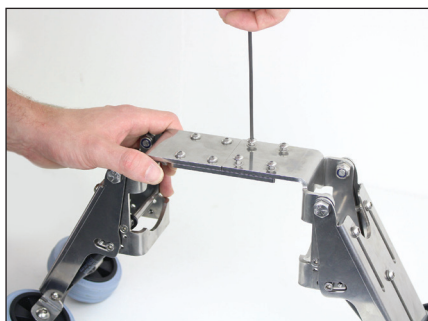
*4mm for BEP150/140

6mm for BEP300



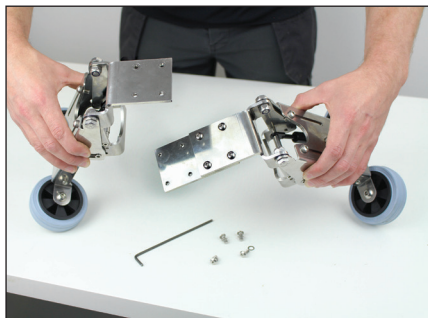
02

Remove the centre wheel from each side of the crawler.



03

Prepare the Stabiliser by removing 4 screws and washers from one half of the base plate.

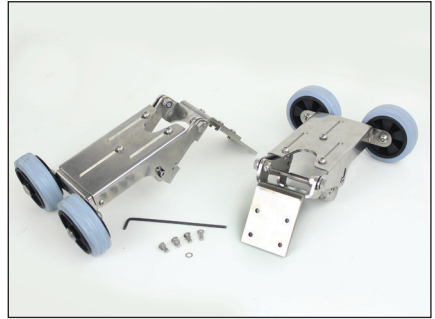


04

Separate the two halves of the Stabiliser ready for installation.

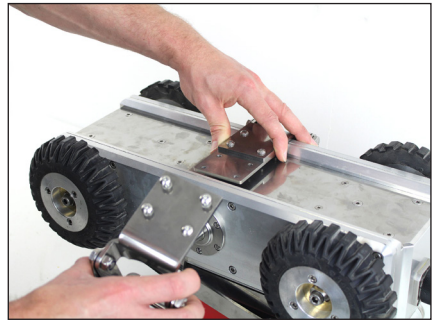
05

The Stabiliser is now ready to attach to the crawler.



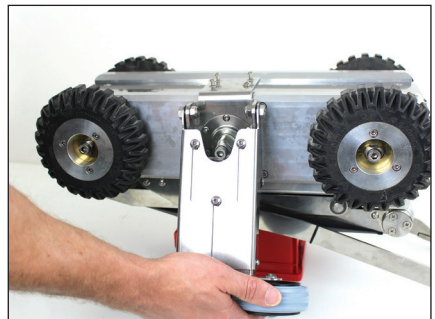
06

Offer the two halves of the Stabiliser onto the crawler, and overlap the base plate without screws over the other base plate with screws.



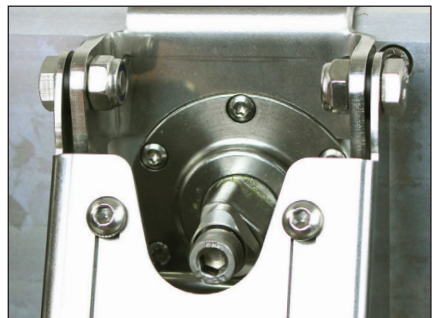
07

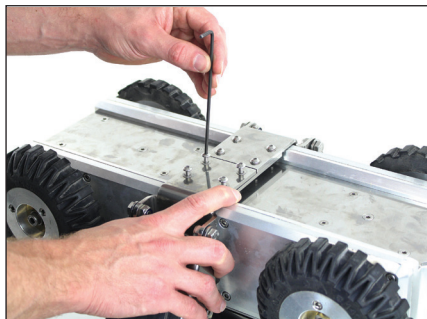
Each side of the Stabiliser should sit and align over the wheel axles.



08

Ensure the Stabiliser is correctly aligned and sitting flush with the crawler.

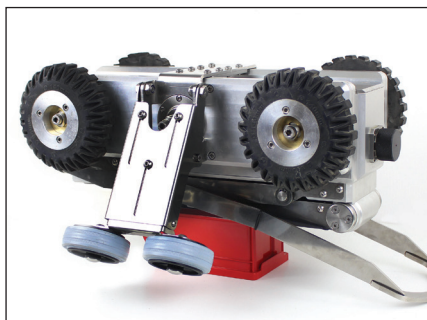




09

Tighten the screws in the base plate to secure to the other half of the base

plate. **NOTE:** Ensure to use the supplied washers with the screws, when attaching the base plate.



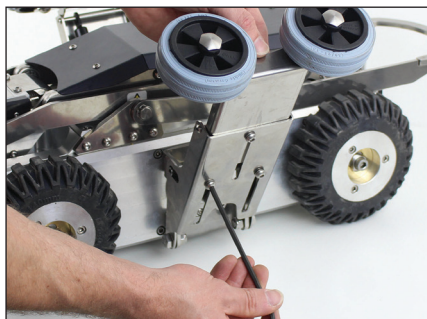
10

This completes the installation of the Stabiliser. Remove the crawler from the raised object and return the crawler to the upright position.



11

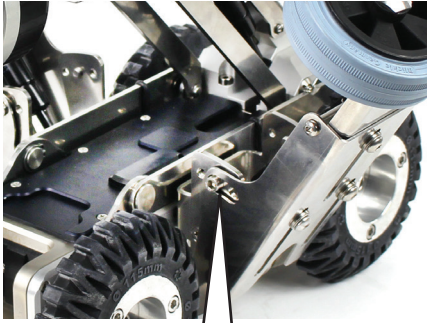
The crawler is now ready to undertake an inspection with the aid of the Stabiliser.



12

EXTENDING THE ARMS

To extend the wheel arms, partially unscrew the 3 screws to release the adjustable arm. Position the arm to the required height. Tighten the 3 screws to secure the arm into position. If necessary repeat the process on the opposite arm.



13

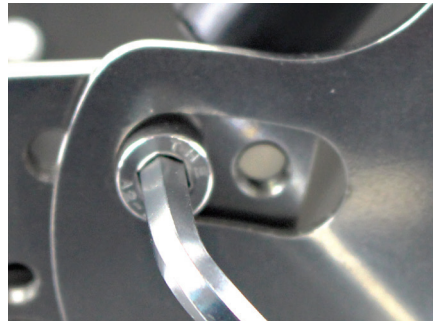
ANGLING THE ARMS

The stabiliser arms can be adjusted to 3 different angles, to suit the shape of the pipe being inspected. Each arm can be adjusted independently.



13a

Locate the adjusting device as shown above.



13b

Use a 4mm T-Bar/Allen key to loosen and remove the screw. Position the spring loaded arm to the required angle. Replace screw into appropriate hole. Tighten screw to secure arm in position. If necessary, repeat on the opposite arm.



Position 1



Position 2



Position 3



Minicam Ltd
Unit 4, Yew Tree Way,
Stonecross Park,
Golborne,
Warrington,
WA3 3JD
United Kingdom

Tel: +44 (0)1942 270524
Email: info@minicam.co.uk
www.minicamgroup.com

