

CAMERA REELS

Minicam Hathorn Micron

Micron camera reels can be used with either Minicam Hathorn control modules (H12+ recommended), or with your own mobile Apple/Android device, should you opt for the Wi-Fi option. The Wi-Fi option is a standalone camera system that allows live streaming and recording to up to three devices at the same time using Hathorn's free app. It is powered by an external Milwaukee® 18V or equivalent battery (sold separately), which can last over 12 hours.

Micron reels are trusted by plumbers, general contractors, and home inspectors to deliver crystal clear, recordable video inspections of small pipes 38 mm to 76 mm. These reels offer a butt-welded steel frame construction and 30 m (100 ft) of premium 7.5 mm push rod. Both styles of reel come equipped with 25 mm straight view camera heads fitted with super bright, cool running LEDs for optimal picture quality.

These features give Micron reels the ultimate in portability. The system has a full one-year warranty.

STANDARD REEL



WI-FI REEL



30 m (100 ft)
of Push Rod



512 Hz or 640
Hz High Power
Sonde



STANDARD VERSION

To be paired with
Hathorn H12+
Controller



WI-FI VERSION

To be paired with
Phone or Tablet



Works with 18V
Milwaukee® or
Equivalent Batteries*



Industry-
Leading
Warranty

* Battery: Milwaukee 18V is default, other brand 18V batteries can be used with adaptors.



MINICAM HATHORN | MICRON

CAMERA REELS

MICRON WI-FI SPECIFICATIONS

Display

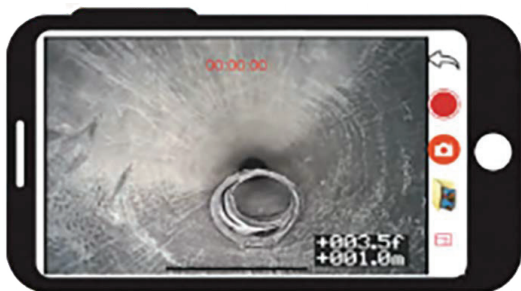
Size & Display	Dependent upon Apple/Android device
----------------	-------------------------------------

Recording, Storage & Features

Video Recording	MPEG4
Screen Shot	JPEG
File Storage	Mobile device, cloud or USB
Footage Counter	Feet or meters, resettable
Sonde Frequency	512 Hz or 640 Hz High Power Sonde
Push Rod	HDPE - 30 m (100 ft) of 7.5 mm
Start Up Time	~15 seconds

Power

Battery (not incl.)	Only Milwaukee® M18 18V or equivalent*
Battery Life	12 hrs. using 3.0Ah (sonde off)
AC/DC Adapter	12V - 4.1A (included)
Wi-Fi Frequency	IEEE802.11b/g/n



STANDARD MICRON SPECIFICATIONS

Display

Size & Display	Compatible with All Hathorn control modules
----------------	---------------------------------------------

Features

Sonde Frequency	High power 512Hz or 640Hz (available only with H12+ controller)
Push Rod	HDPE - 30 m (100 ft) pf 7.5 mm
Recording, Storage & Power	Please refer to H12+ specifications

Weight & Dimensions

Weight w/Battery	7 Kg (15lbs.) without battery
------------------	-------------------------------

Dimensions (L×W×H)	406 × 304 × 254 mm
--------------------	--------------------

Environmental

Water Resistance - Camera and Rod	IP67 to 60psi
-----------------------------------	---------------

Water Resistance - Battery Cradle	IP66
-----------------------------------	------

Operating Temperature -10°C to 50°C (14°F to 122°F) Storage	
----------------------------------------------------------------	--

Temperature	-20°C to 60°C (-4°F to 140°F)
-------------	-------------------------------

Catalog #	Camera Head	Wi-Fi	Self Leveling	Rod Length	Rod Size	Min. 90° Elbow	Max Pipe Well Lit	Weight	Dimensions
	MM			M	MM	MM	MM	KG	MM
MC-1100-O	25	✗	✗	30	7.5	38	76	7	406 × 304 × 254
MC-1100-O	25	✗	✗	30	10	38	76	7	406 × 304 × 254
WMC-1100-O	25	✓	✗	30	7.5	38	76	7	406 × 304 × 254
WMC-1100-O	25	✓	✗	30	10	38	76	7	406 × 304 × 254



Minicam Ltd, Unit 33, Ravenscraig Road, Little Hulton, Salford, M38 9PU
Tel: +44 (0) 1942 270524 • Email: info@minicamgroup.com
www.minicam.co.uk